

SUN		5	12	19	26
MON		6	13	20	27
TUE		7 World Health Day	14 Ambedkar Jayanti	21	28
WED	1	8	15	22 Earth Day Celebration	29
THU	2 A.Y. Begins	9	16	23	30
FRI	3 Good Friday	10	17	24	
SAT	4	11 Orientation Meet & Kit Distribution	18	25	



SUN		5	12	19	26
MON		6	13	20	27
TUE		7 World Health Day	14 Ambedkar Jayanti	21	28
WED	1	8	15	22 Earth Day	29
THU	2 A.Y. Begins	9	16	23	30
FRI	3 Good Friday	10	17	24	
SAT	4	11 Orientation Meet	18 - World Heritage Day - Bagless Day - Shramdaan	25	



Orientation & Welcoming

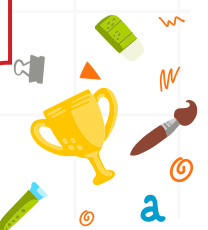
Students and parents are introduced to the RIS learning environment and school culture, helping students begin the academic year with confidence and enthusiasm.

तद्विद्धि प्रणिपातेन परिप्रश्नेन सेवया ।
उपदेक्ष्यन्ति ते ज्ञानं ज्ञानिनस्तत्त्वदर्शिनः ॥

At RIS, students learn to value the love, wisdom and guidance of parents and grandparents. By respecting elders and learning from their experiences, students grow with gratitude and strong family values.

संस्कार = Gratitude towards Elders =

RIS module on value education



SUN	31	3	10	17	24	
MON		Summer Vacation Begins	4	11	18	25
TUE			5	12	19	26
WED			6	13	20	27 Bakri Id
THU			7	14	21	28
FRI	1	- Gujarat Day - Labour Day	8	15	22	29
SAT	2	PTM	9	16	23	30



SUN	31	3	10	17	24	
MON		Summer Vacation Begins	4	11	18	25
TUE			5	12	19	26
WED			6	13	20	27 Bakri Id
THU			7	14	21	28
FRI	1	- Gujarat Day - Labour Day - CCA	8	15	22	29
SAT	2	PTM	9	16	23	30



श्रमदान

Shramdaan encourages students to understand the dignity of labour and develop responsibility towards their surroundings through meaningful service activities.

अन्नाद्भवन्ति भूतानि पर्जन्यादन्नसम्भवः ।
यज्ञाद्भवति पर्जन्यो यज्ञः कर्मसमुद्भवः ॥

Students develop awareness that nature sustains all life. By caring for water, plants and their surroundings, they learn to become responsible stewards of the environment.

संस्कार
RIS module on value education

= Gratitude towards Environment =

SUN		7	14	21	28
MON	1	8 School Reopens	15	22	29 Visitor
TUE	2	9	16	23 My Toy Vehicle	30
WED	3	10	17 Red Colour Day Celebration	24	
THU	4	11	18	25 Mud Day Celebration	
FRI	5	12	19 Yoga Day Celebration	26 Muharram	
SAT	6	13 Orientation Meet & Kit Distribution (New Admission)	20 Father's Day Celebration	27 PTM	



SUN		7	14	21 Int. Yoga Day	28
MON	1	8 School Reopens	15	22	29 CT - 1 (I-V) PT - 1 (VI-X) UT - 1 (XI-XII)
TUE	2	9	16	23	30
WED	3	10	17	24 Investiture Ceremony	
THU	4	11	18	25	
FRI	5	12 World Day Against Child Labour	19	26 Muharram	
SAT	6	13 Orientation Meet	20 - Yoga Day Celebration - Bagless Day - Shramdaan	27	



Investiture Ceremony

The Investiture Ceremony formally appoints the student council leaders who pledge to uphold discipline, responsibility, and leadership throughout the academic year.

तस्मादुत्तिष्ठ कौन्तेय युद्धाय कृतनिश्चयः ॥

Students learn to face challenges with confidence and determination, developing the courage to take initiative and lead with responsibility.

संस्कार
RIS module on value education

= Leadership & Courage =

SUN		5	12	19	26
MON		6 Yellow Colour Day Celebration	13	20	27 Sparsh Centre Level Competition
TUE		7	14 Brush your Teeth	21 Rainy Day Celebration	28
WED	1	8	15	22	29 Guru Purnima Celebration
THU	2	9	16	23	30
FRI	3	10	17	24 Visitor	31 Friendship Day Celebration
SAT	4 Sing with Mother	11 Phonic Workshop	18 Grand Parents Day	25 PTM	



SUN		5	12	19	26 Kargil Vijay Divas
MON		6	13	20	27 CT - 2 (I-II)
TUE		7	14	21	28
WED	1 Doctor's Day	8	15	22 National Flag Day	29 Guru Purnima Celebration
THU	2	9	16	23	30
FRI	3	10	17	24	31
SAT	4 - PTM (I - XII) - Health Camp	11 - Bagless Day - CCA - Experiential Learning	18	25	



Bagless Day

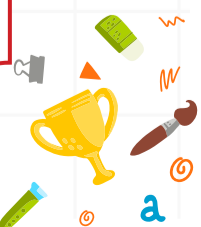
Bagless Day encourages students to explore learning beyond textbooks through hands-on activities, projects, and creative exploration.

अभयं सत्त्वसंशुद्धिर्ज्ञानयोगव्यवस्थितिः ।

Integrity encourages students to be honest in their actions, fair in their decisions and responsible in their academic and personal lives.

संस्कार = Integrity =

RIS module on value education



SUN	30	2	9	16	23
MON	31	3	10	17 Kilkariya Centre Level Competition	24
TUE		4 Blue Colour Day Celebration	11	18	25 Rakshabandhan Celebration
WED		5	12	19	26 Eid-e-Milad
THU		6	13	20	27 Link Holiday
FRI		7	14 Independence Day Celebration	21 My Toy Animal	28 Raksha Bandhan
SAT	1	8	15 Independence Day	22	29



SUN	30	2	9	16	23
MON	31	3	10 Quit India Day	17	24
TUE		4	11	18	25
WED		5	12 Int. Youth Day	19	26 Eid-e-Milad
THU		6	13	20	27 Link Holiday
FRI		7	14	21	28 Raksha Bandhan
SAT	1	8 PTM (I - II)	15 Independence Day	22 - Bagless Day - CCA - Experiential Learning	29 - National Sports Day - Link Holiday



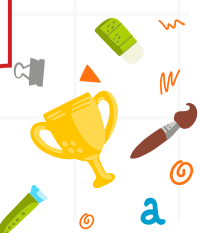
Experiential Learning at RIS focuses on learning through doing—projects, experiments, and real-world activities that deepen understanding and curiosity.

सुहृन्मित्रार्युदासीनमध्यस्थदृष्यबन्धुषु
समबुद्धिर्विशिष्यते ॥

Students understand that meaningful friendships are built on respect, kindness and trust, creating a supportive and positive school community.

संस्कार = Friendship =

RIS module on value education



SUN		6	13	20	27
MON		7	14 Ganesh Chaturthi Celebration	21 Mid Term Starts	28
TUE	1	8 Green Colour Day Celebration	15 - Ganesh Chaturthi - Samvatsari	22 Abhiyakti Centre Level Competition	29 Fruit Day
WED	2	9	16	23	30
THU	3 Janmashtami & Teacher's Day Celebration	10	17	24 Fancy Dress	
FRI	4 Janmashtami	11 Visitor	18	25	
SAT	5 Teacher's Day	12	19	26	



SUN		6	13	20	27
MON		7 CT - 3 (I-II) CT - 2 (III-V) HY - (VI-VIII; XI-XII) PT - 2 (IX-X)	14 Hindi Diwas Celebration	21	28
TUE	1	8	15 - Ganesh Chaturthi - Samvatsari	22	29
WED	2	9	16	23	30
THU	3 Janmashtami Celebration	10	17	24	
FRI	4 Janmashtami	11	18	25	
SAT	5 Teacher's Day	12	19	26 CCA	



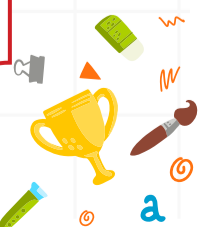
Project Samvedna nurtures empathy and social responsibility by encouraging students to serve communities and practice kindness through acts of giving.

नियतं कुरु कर्म त्वं कर्म ज्यायो ह्यकर्मणः ।

Students learn that being a responsible citizen means following rules, respecting public spaces and contributing positively to society.

संस्कार = Responsible Citizen =

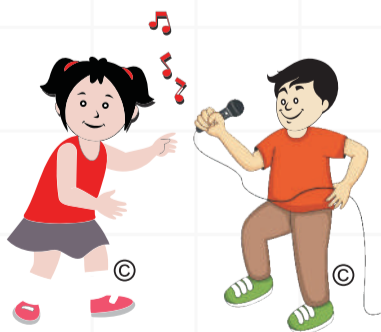
RIS module on value education



SUN		4	11	18	25
MON		5	12	19 Navratri Link Holiday	26 Jhankar Centre Level Competition
TUE		6 Pink Colour Day Celebration	13 Dussehra	20	27
WED		7	14	21	28
THU	1 Gandhi Jayanti Celebration	8	15 Project Samvedna	22	29
FRI	2 Mahatma Gandhi Jayanti	9	16	23 Visitor	30
SAT	3 Report Card Day Term-I	10	17	24	31 Talent Hunt / Carnival



SUN		4	11	18	25
MON		5	12	19 Navratri Link Holiday	26
TUE		6 IGKO	13 Dussehra	20 IEO	27
WED		7	14	21	28
THU	1 Gandhi Jayanti Celebration	8 Indian Air Force Day	15 Project Samvedna	22	29
FRI	2 Mahatma Gandhi Jayanti	9	16	23	30
SAT	3 - PTM (I-XII) - Book Fair	10	17 Navratri Celebration	24	31 Talent Hunt / Carnival



Talent Hunt

Talent Hunt provides a grand platform for students to showcase talents in music, dance and drama, celebrating every unique spark within.

मनःप्रसादः सौम्यत्वं मौनमात्मविनिग्रहः ।

संस्कार
RIS module on value education

= Cleanliness =


Students recognize that cleanliness in their surroundings and discipline in their habits create a healthy and focused learning environment.

SUN	1	8 Diwali	15	22	29
MON	2	9	16	23	30
TUE	3	10	17	24 Guru Nanak Jayanti	
WED	4 Diwali Celebration	11	18	25	
THU	5 Diwali Break	12	19 School Re-opens	26	
FRI	6	13	20	27	
SAT	7	14 Children's Day	21	28 Mother's Day Celebration	



SUN	1	8 Diwali	15	22	29
MON	2	9	16	23	30 CT - 4 (I-II) CT - 3 (III-V) PT - 2 (VI-VIII) PT - 3 (IX-X) UT - 2 (XI-XII)
TUE	3	10	17	24 Guru Nanak Jayanti	
WED	4 Diwali Celebration	11	18	25	
THU	5 Diwali Break	12	19 School Re-opens	26 IMO	
FRI	6	13	20	27	
SAT	7	14 Children's Day	21	28	




**Entrepreneurship
Module**

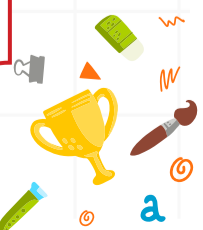
Through the Entrepreneurship Module, students learn business fundamentals, financial awareness and leadership by developing and presenting innovative ideas.

आत्मौपम्येन सर्वत्र समं पश्यति योऽर्जुन ।
सुखं वा यदि वा दुःखं स योगी परमो मतः ॥

Students develop empathy by understanding the feelings of others and offering support, kindness and respect to everyone around them.

संस्कार
RIS module on value education

= Compassion =



SUN		6	13	20	27
MON		7	14	21	28
TUE	1	8 Orange Colour Day Celebration	15 Aakar Centre Level Competition	22	29
WED	2	9	16	23	30
THU	3	10 Udaan Centre Level Competition	17	24 Christmas Celebration	31
FRI	4 Doll's Day	11 Fancy Dress	18 Visitor	25 Christmas	
SAT	5	12 PTM	19	26	



SUN		6	13	20 Gita Jayanti	27
MON		7	14	21	28
TUE	1	8	15	22 - National Mathematics Day - CCA	29
WED	2	9	16	23	30
THU	3 ISO	10 Human Rights Day	17	24	31
FRI	4	11	18	25 Christmas	
SAT	5	12 PTM (I - XII)	19	26	



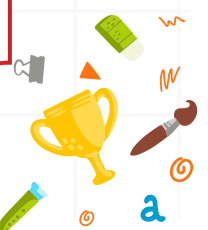
Yuva Chetna inspires students to think creatively and develop leadership qualities through motivational sessions and future-focused activities.

दातव्यमिति यद्दानं दीयतेऽनुपकारिणे ।

Students experience the joy of sharing their time, knowledge and resources with others, strengthening the spirit of giving.

संस्कार
RIS module on value education

= Generosity =



SUN	31	3	10	17	24
MON		4 Black & White Colour Day Celeb.	11	18	25 Republic Day Celebration
TUE		5	12	19	26 - Republic Day - Edubition / Carnival
WED		6	13 Annual Event	20	27
THU		7	14 Makar Sankranti	21	28
FRI	1	8 Fancy Dress	15 Makar Sankranti Link Holiday	22	29 Visitor
SAT	2	9	16	23	30 PTM



SUN	31	3	10	17	24
MON		4	11	18	25 National Voters Day
TUE		5 National Youth Day	12 ISSO	19	26 - Republic Day - Edubition / Carnival
WED		6	13 Annual Event	20	27
THU		7	14 Makar Sankranti	21	28
FRI	1	8 Makar Sankranti Link Holiday	15	22	29
SAT	2	9 Makar Sankranti Link Holiday	16	23	30 - Bagless Day - Experiential Learning



EDUBITION

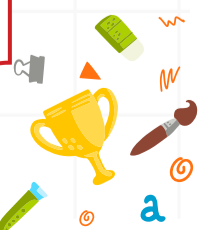
Edubition is RIS's innovation exhibition where students present projects, ideas and models, promoting inquiry-based and experiential learning.

बाह्यस्पर्शेष्वसत्तात्मा विन्दत्यात्मनि यत्सुखम् ।
स ब्रह्मयोगयुक्तात्मा सुखमक्षयमश्नुते ॥

Students discover that true happiness comes from learning, growth and inner satisfaction rather than external rewards.

संस्कार
RIS module on value education

= Happiness =



SUN		7	14	21	28
MON	1	8 Brown Colour Day Celebration	15	22	
TUE	2	9 Class Photo	16 Traffic Day	23	
WED	3	10	17	24	
THU	4	11 Vasant Panchami Celebration	18	25	
FRI	5	12	19 Visitor	26	
SAT	6 Sports Day	13	20	27 PTM	



SUN		7	14 Experiential Learning	21 Matrubhasha Diwas	28 National Science Day
MON	1 CT - 5 (I - II)	8	15	22	
TUE	2	9 Class Photo	16	23	
WED	3	10	17	24	
THU	4 World Cancer Day	11 Vasant Panchami	18	25	
FRI	5	12	19	26 - National Science Day Celebration - CCA	
SAT	6 Sports Day	13 PTM (I - II)	20 Matrubhasha Diwas Celebration	27	



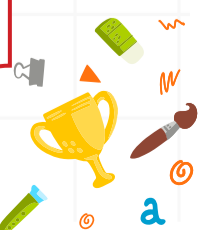
Sports Day celebrates teamwork, discipline, and healthy competition. Students participate in athletic events that build confidence, fitness and sportsmanship.

धृत्युत्साहसमन्वितः सिद्ध्यसिद्ध्योर्निर्विकारः ।

Students develop a positive mindset, learning to stay hopeful and continue working towards their goals even when faced with challenges.

संस्कार
RIS module on value education

= Optimism =



www.rangolichool.co.in

www.risgandhinagar.in

SUN		7	14	21	28
MON	1	8	15	Holi	22
TUE	2	9	16	23	30
WED	3	Eid-UI-Fitr	17	24	31
THU	4	11	Fun Day	18	25
FRI	Mahashivratri Celebration	5	12	Fun Day	19
SAT	Mahashivratri	6	13	20	27
					Report Card Day (Term II)



SUN		7	14	21	28
MON	1	8	15	Holi	22
TUE	2	9	16	23	30
WED	- CT - 6 (I-II) - CT - 4 (III-V) - Final Exam (VI-VIII)	3	Eid-UI-Fitr	17	24
THU	4	11	18	25	
FRI	5	12	19	Good Friday	26
SAT	Mahashivratri	6	13	20	27
					Report Card Day



The Sanskar module focuses on building strong values such as honesty, respect, gratitude and responsibility among students.

A.Y. 2027-28 begins - 1st April

यस्मान्नोद्विजते लोको लोकान्नोद्विजते च यः । Students build resilience by staying calm and balanced during difficulties, learning to adapt, persevere and move forward with confidence.
हर्षामर्षभयोद्वेगैर्मुक्तो यः स च मे प्रियः ॥

संस्कार = Resilience =

RIS module on value education